

# CNC Panel Saw

## Diamond 450

# Parts list

### IMPORTANT

For your safety, read instructions carefully before assembling or using this product. Save this manual for future reference.



Original Instruction  
V.1-201810

### HEALTH AND SAFETY GUIDELINES

Always follow the instructions provided with the manual. Always wear safety glasses when using woodworking equipment. Always disconnect the power before adjusting any equipment. Failure to observe proper safety procedures and guidelines can result in serious injury.

**WARNING:** Do not allow familiarity (gained from frequent use of your machine and accessories) to become commonplace. Always remember that a careless fraction of a second is sufficient to inflict severe injury.

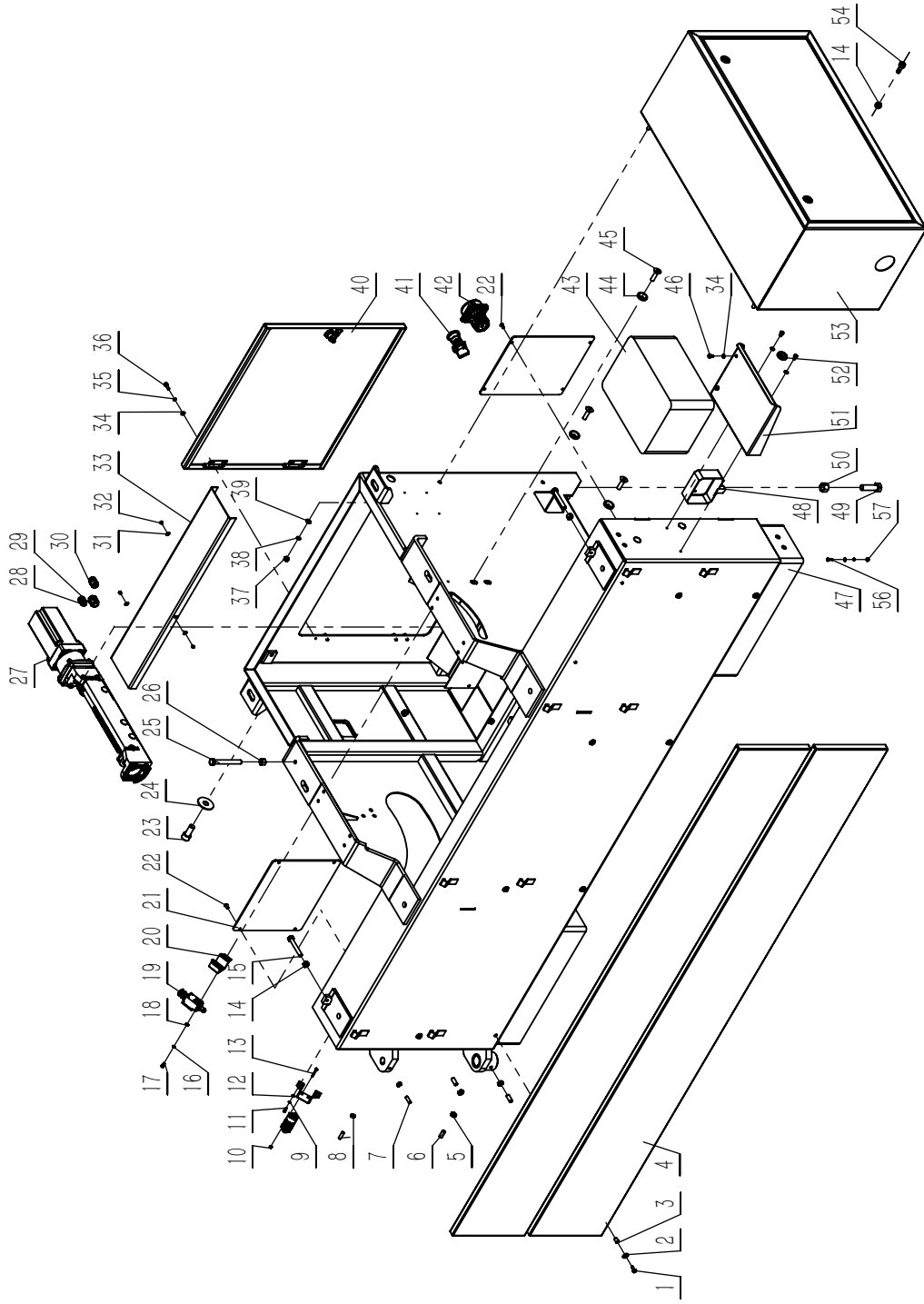


Always wear safety glasses when using woodworking equipment.



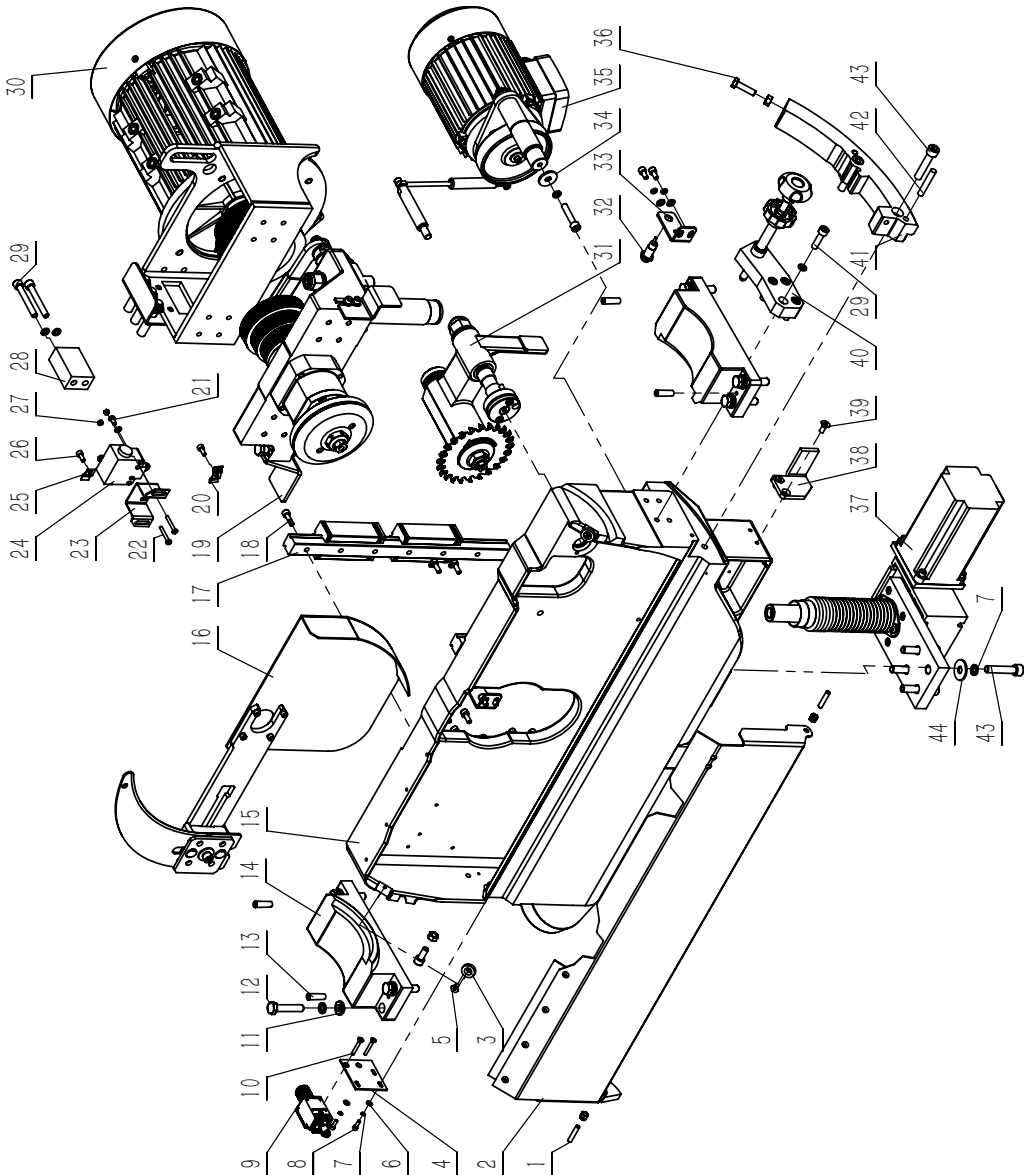
Always read the instructions provided before using woodworking equipment.

# 1.Frame Assembly



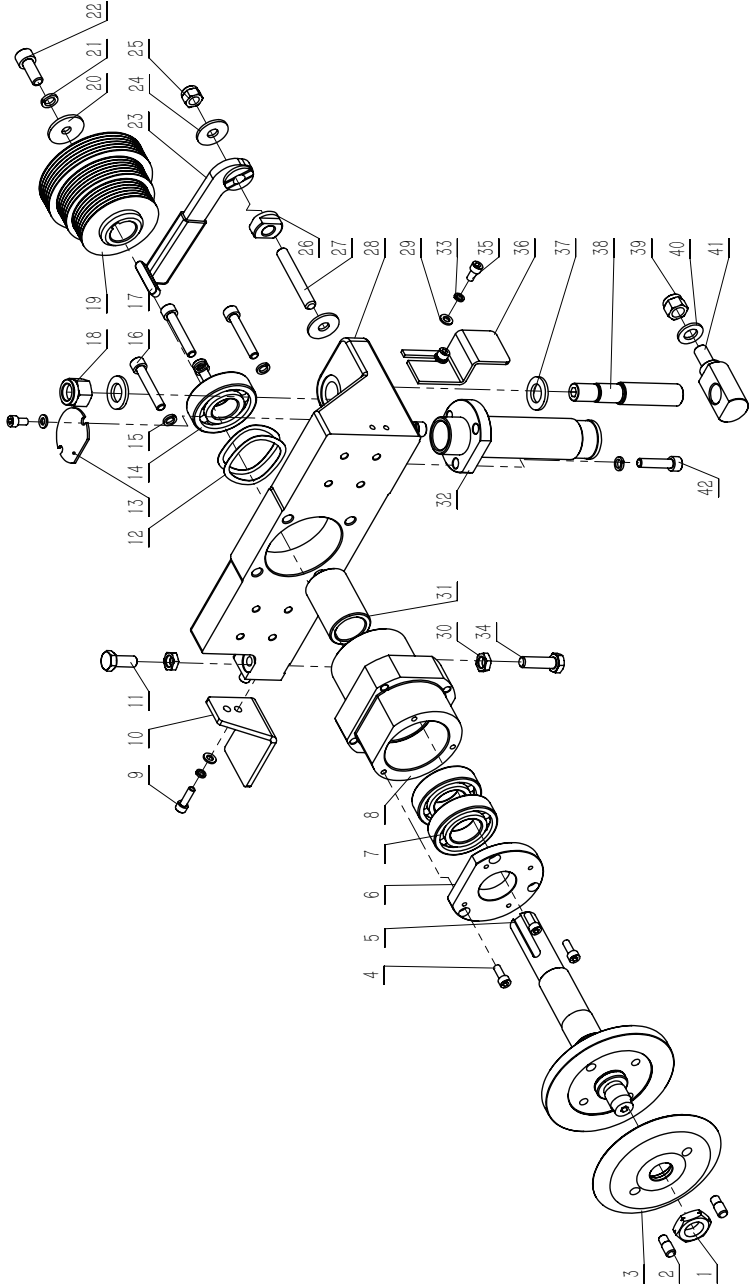
No.	Description	Parts No.	QTY
1	Hexagon-headed bolt(full thread)	M6X16GB5783Z	8
2	Oversize washer A class	WSH6GB96D1Z	8
3	Small countersunk head riveted nuts	M6X13D5GB17880D3Z	8
4	Front cover	JXPS1604010002	2
5	Hexagon thin nut	M10GB6172D1Z	3
6	Hex socket set screws with flat point	M10X25GB77B	3
7	Hex socket set screws with flat point	M8X25GB77B	2
8	Hexagon thin nut	M8GB6172D1Z	2
9	Stardard spring washer	WSH4GB93Z	2
10	Hexagon nut type-1	M4GB6170Z	4
11	Hexagon socket cap screws	M4X12GB70D1Z	2
12	Flat washer A class	WSH4GB97D1Z	2
13	Cross recessed pan head screw	M4X30GB818Z	4
14	Hexagon nut type-1	M10GB6170Z	3
15	Hexagon-headed bolt(full thread)	M10X70GB5783Z	2
16	Stardard spring washer	WSH5GB93Z	6
17	Hexagon socket cap screws	M5X10GB70D1Z	2
18	Flat washer A class	WSH5GB97D1Z	6
19	Limited switch	QKS7-02	2
20	Limited switch mounting plate	JXPS1604020007	2
21	Electric appliance door	JXPS1604010001	2
22	Hexagon socket button head screw	M6X12GB70D2Z	10
23	Hexagon socket cap screws	M16X35GB70D1B8D8	4
24	Oversize washer A class	WSH16GB96D1Z	4
25	Hexagon-headed bolt(full thread)	M12X100GB5783Z	1
26	Hexagon nut type-1	M12GB6170Z	1
27	Deflection worm assembly	JXPS1604027000	1
28	M12 cable gland	JL91046200	3
29	M20 cable gland	JXSM0401010003	5
30	M16 cable gland	JXSM0401010004	3
31	Oversize washer A class	WSH4GB96D1Z	3
32	Cross recessed pan head screw	M4X6GB818Z	3
33	Winning slot cover	JXPS1604010003A	1
34	Flat washer A class	WSH6GB97D1Z	8
35	Stardard spring washer	WSH6GB93Z	4
36	Hexagon socket cap screws	M6X16GB70D1Z	4
37	Hexagon nut type-1	M8GB6170Z	4
38	Stardard spring washer	WSH8GB93Z	4
39	Flat washer A class	WSH8GB97D1Z	3
40	Back door board assembly	JXPS1604012000	1
41	Emergency switch (Self-lock)	XB5AS542C	1
42	Change over switch	ZH-HD-2-01	1
43	Zebra printer	GK888CN ( optional)	1
44	Countersink gasket	SCPS1601026009	3
45	Hex socket countersunk head screws	M10X40GB70D3Z	3
46	Hexagon socket cap screws	M6X10GB70D1Z	4
47	The main body assembly( CNC)	JXPS1604011000	1
48	Junction box assembly	JXPS1201090009	1
49	Hexagon-headed bolt(full thread)	M16X55GB5783Z	2
50	Hexagon nut type-1	M16GB6170Z	2
51	Printer supporter 2	JXPS1604080007	1
52	Rubber bushing	JL20072003	1
53	Electric appliance box assembly	JXPS1604091000	1
54	Hexagon-headed bolt(full thread)	M10X40GB5783Z	1
55	Transformer	BK-800VA	1
56	Cross recessed pan head screw	M5X16GB818Z	4
57	Hexagon nut type-1	M5GB6170Z	4
58	Power cable	V15250600-1007	1

# 2.Trunion Assembly



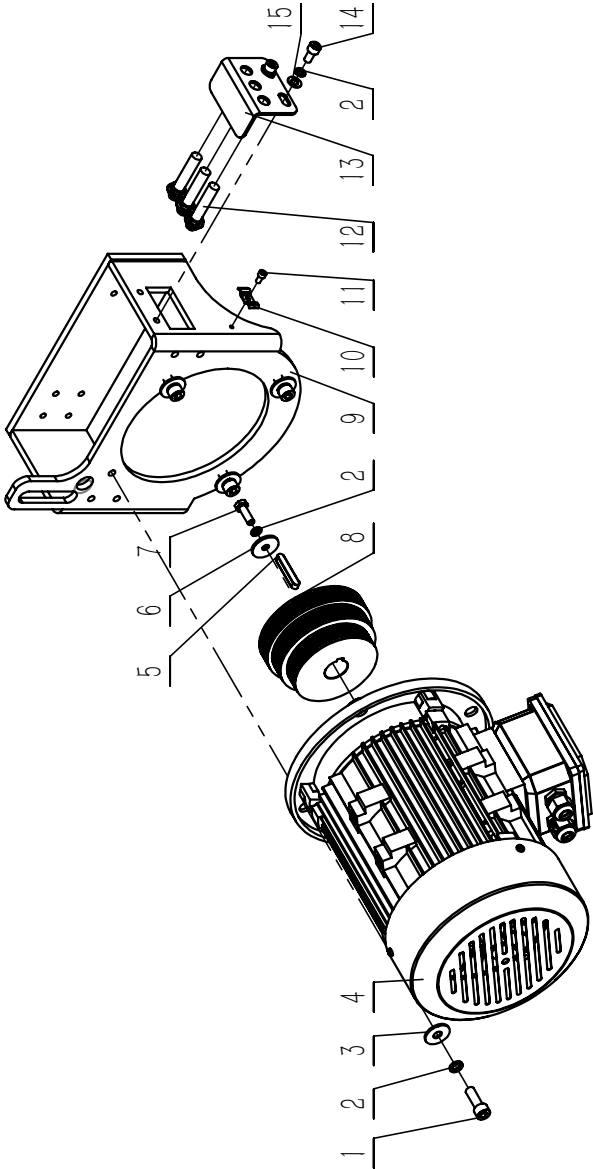
No.	Description	Parts No.	QTY
1	Hex socket set screws with flat point	M6X30GB77B	2
2	Saw blade shield assembly	JXPS1604029000	1
3	Magnet	JXPS1602020013	2
4	Travel switchboard	JXPS1604020011	1
5	Hex socket countersunk head screws	M5X12GB70D3Z	2
6	Flat washer A class	WSH6GB97D1Z	12
7	Standard spring washer	WSH6GB93Z	43
8	Hexagon socket cap screw	M4X12GB70D1Z	2
9	Safety switch	QKS7-01	1
10	Cross recessed countersunk head screw	M4X30GB819D1Z	1
11	Thick washer	JL46090009	8
12	Hexagon-headed bolt(full thread)	M10X50GB5783Z	8
13	Taper pins with internal thread	PIN8X30GB118Z	4
14	Bracket base	JXPS1602020004E	2
15	Trunion	JXPS1604020003	1
16	Riving knife assembly	JXPS1602029000B	1
17	Linear guide assembly	JXPS1604020001	2
18	Hexagon socket cap screw	M6X12GB70D1Z	35
19	Spindle seat assembly	JXPS1604021000	1
20	Cable clamp	I502014-01	1
21	Cross recessed pan head screw	M5X10GB818Z	4
22	Cross recessed pan head screw	M4X30GB818Z	4
23	Limited switch mounting plate	JXPS1604020007	2
24	Limited switch	QKS15	2
25	Cable clamp	I502014-02	2
26	Hexagon socket cap screw	M5X12GB70D1Z	3
27	Hexagon nut type-1	M8GB6170Z	8
28	Stop block	JXPS1604020006	3
29	Hexagon socket cap screw	M8X20GB70D1Z	10
30	Motor assembly	JXPS1604023000	1
31	Scorig saw assembly	JXPS1604022000	1
32	Approach switch	PR-12N4B	2
33	Limited switch mounting plate	JXPS1604020018	2
34	oversize washer	WSH8GB5287Z	1
35	Scoring motor assembly	JXPS1604024000	1
36	Hexagon-headed bolt(full thread)	M8X30GB5781Z	1
37	Alevator assembly(stepper motor)	JXPS1604026000	1
38	Deflection adjusting board	JXPS1604020016	1
39	Hexagon socket countersunk head screws	M6X16GB70D3Z	2
40	Scoring adjust assembly	JXPS1604028000	1
41	Worm wheel	SCPS1601026004	1
42	Taper pins	PIN8X50GB117Z	2
43	Hexagon socket cap screw	M10X50GB70D1B	6
44	large washer A class	WSH10GB96D1Z	6
45	Poly V-blet	JXPS1602020002B	1
46	Poly V-blet	4PJ560GB16588	1
47	Tension screw	JXPS1604020005	1
48	Adjusting nut	JXPS1604020004	1
49	Locking nut	JXPS1604020008	1
50	Locking handle wedlment	JXPS1604020009	1
51	Hexagon locking nut	M10GB889D1Z	5
52	Circlips for shaft type A	CLP20GB894D1B	1
53	Hexagon socket set screws with flat point	M10X70GB77B	1
54	Sliding bearing	P20X23X20GB12613D	2
	Lock sleeve	JXPS1604020013	1

### 3.Spindle assembly



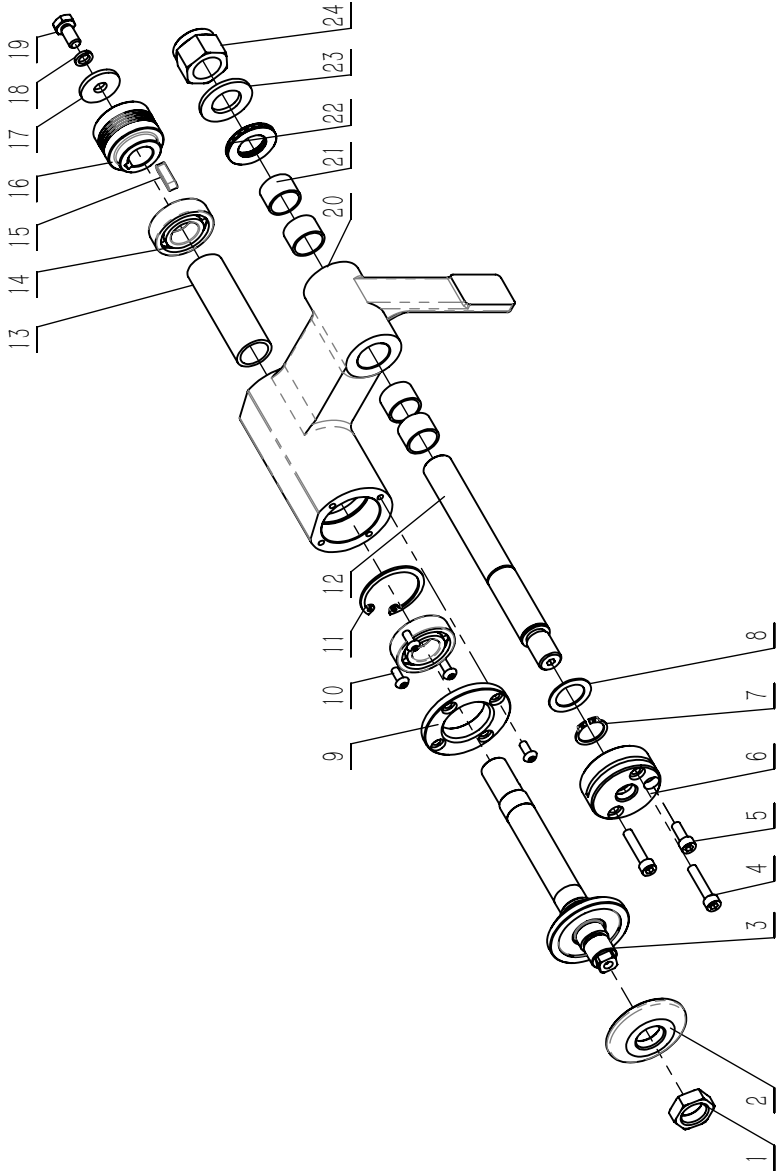
No.	Description	Parts No.	QTY
1	Locking nut	JXPS1201021001	1
2	Locating pin	GRPS1401021002	2
3	Saw blade clamp	JXPS1602021002A	1
4	Hexagon socket cap screw	M6X16GB70D1Z	3
5	Principle axis	JXPS1602021001B	1
6	Bearing end plate	JXPS1602021010A	1
7	deep groove ball bearing	BRG6206-2RSLGB276SKF	2
8	Bearing base	JXPS1604021002	1
9	Hexagon socket cap screw	M6X20GB70D1Z	2
10	Elevator stop plate	JXPS1604021004	1
11	Hexagon-headed bolt(full thread)	M10X25GB5783Z	1
12	Wave spring washers	WSH62JB7590B	2
13	Dust cover	JXPS1604021006	1
14	deep groove ball bearing	BRG6305-2RSLGB276SKF	1
15	Standard spring washer	WSH8GB93Z	7
16	Hexagon socket cap screw	M8X50GB70D1Z	4
17	Flat key A type	PLN8X7X40GB1096	1
18	Hexagon locking screw	M16GB889D1Z	1
19	Spindle belt pulley	JXPS1602021007E	1
20	oversize washer	WSH10GB5287Z	1
21	Standard spring washer	WSH10GB93Z	1
22	Hexagon socket cap screw	M10X25GB70D1Z	1
23	Locking handle wedlment	JXPS1604020009	1
24	Large washer A class	WSH10GB96D1Z	2
25	Hexagon locking screw	M10GB889D1Z	1
26	Lock sleeve	JXPS1604020013	1
27	Hex socket set screws with flat point	M10X70GB77B	1
28	Axle seat	JXPS1604021001	1
29	Flat washer A class	WSH6GB97D1Z	6
30	Hexagon thin screw	M10GB6172D1Z	2
31	Spindle axis spacer bush	JXPS1604021003	1
32	Lifting set	JXPS1604021005	1
33	Standard spring washer	WSH6GB93Z	4
34	Hexagon-headed bolt(full thread)	M10X35GB5783Z	1
35	Hexagon socket cap screw	M6X12GB70D1Z	4
36	Elevator switchboard	JXPS1604020019	1
37	Flat washer A class	WSH16GB97D1Z	2
38	Tension rod	JXPS1604020005	1
39	Hexagon locking screw	M12GB889D1Z	1
40	Flat washer A class	WSH12GB97D1Z	1
41	Adjusting screw nut	JXPS1604020004	1
42	Hexagon socket cap screw	M8X35GB70D1B12D9	3

4.Main motor assembly



No.	Description	Parts No.	QTY
1	Hexagon socket cap screw	M10X30GB70D1Z	4
2	Standard spring washer	WSH8GB93Z	7
3	Large washer A class	WSH10GB96D1Z	4
4	Motor	YSH115552A	1
5	Flat key A type	PLN8X7X50GB1096	1
6	Washer	JXPS1202070005	1
7	Hexagon-headed bolt(full thread)	M8X25GB5783BF	1
8	Motor pulley wheel	JXPS1602023001E	1
9	Motor seat weldment	JXPS1604023100	1
10	Cable clamp	1502014-01	1
11	Hexagon socket cap screw	M5X10GB70D1Z	1
12	Photoelectric switch	E3F-DS30C4	3
13	Speed measurement bracket	JXPS1604023002A	1
14	Hexagon socket cap screw	M8X16GB70D1Z	2
15	Flat washer A class	WSH8GB97D1Z	2

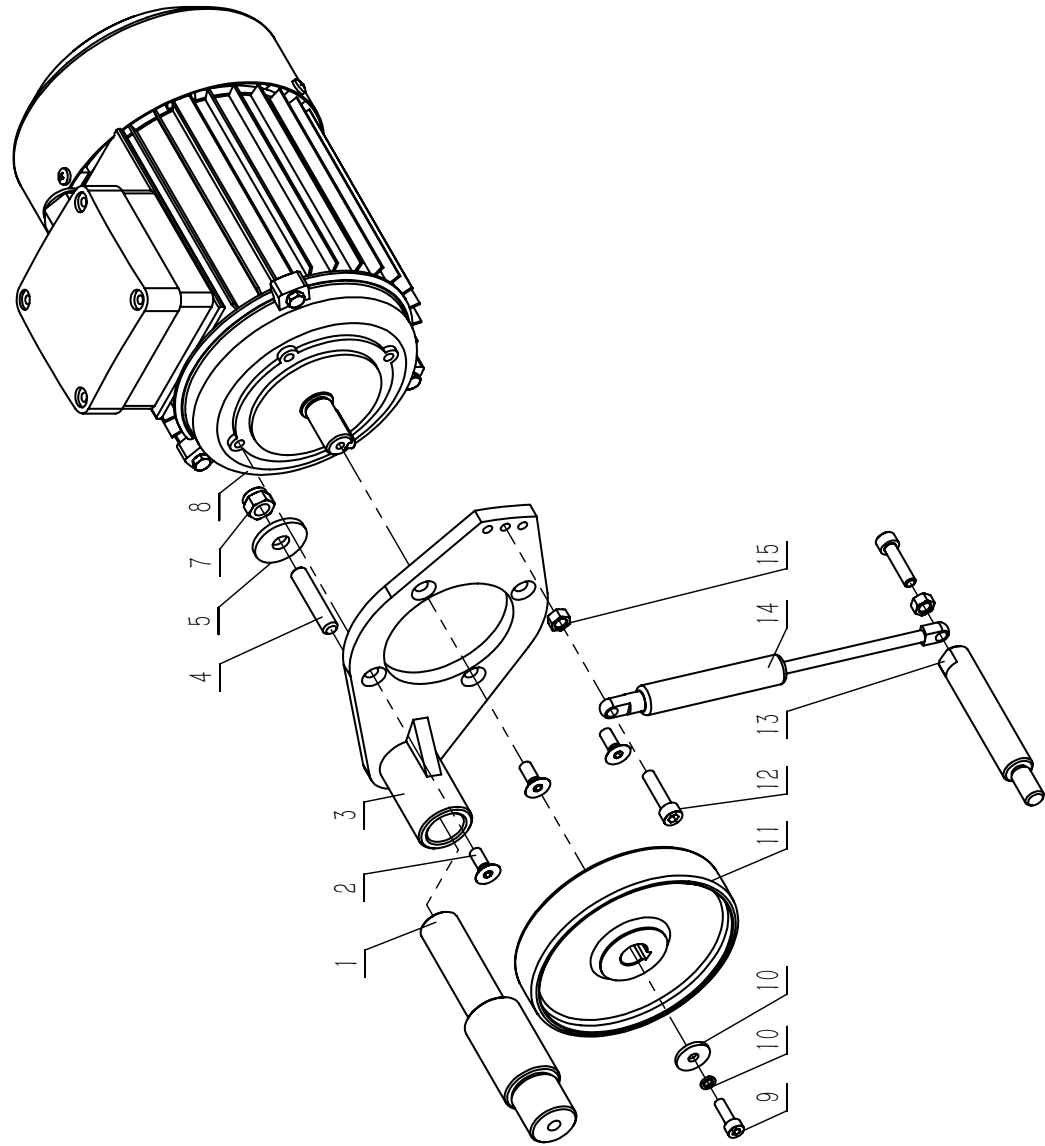
# 5-1.Scoring saw assembly



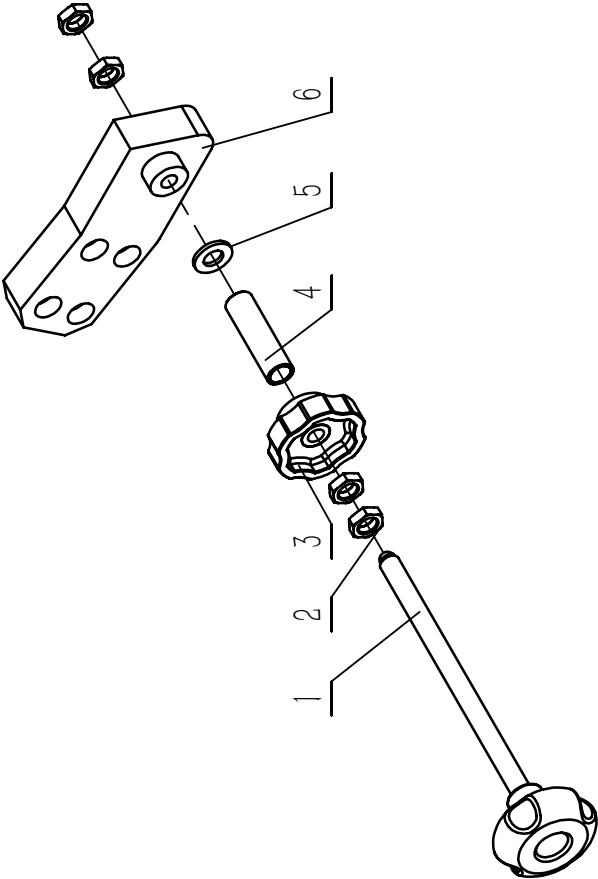
No.	Description	Parts No.	QTY
1	Hexagon thin nut	M18GB6173Z	1
2	Scoring saw blade clamp	JXPS1602022017	1
3	Scoring principle axle	JXPS1604022001	1
4	Hexagon socket cap screw	M6X30GB70D1Z	2
5	Hexagon socket cap screw	M6X16GB70D1Z	1
6	Locking nut	JXPS1604020008	1
7	Circlips for shaft type A	CLP20GB894D1B	1
8	Washer	0000306088F	1
9	Scoring axle seat end cap	JXPS1602022003	1
10	Hexagon socket button head screw	M5X12GB70D2B10D9	4
11	Circlips for aperture type A	CLP42GB893D1B	1
12	Scoring support axle	JXPS1604022002	1
13	Scoring spacer bush	JXPS1604022005	1
14	Deep groove ball bearing	BRG6004-2RZGB276	2
15	Flat key A type	PLN6X6X22GB1096	1
16	Scoring pulley	JXPS1604022006	1
17	Oversize washer	WSH8GB5287Z	1
18	Standard spring washer	WSH8GB93Z	1
19	Left-handed screw	JL82080003	1
20	Scoring axle seat	JXPS1604022004	1
21	Sliding bearing	P20X23X20GB12613D1	4
22	Pushing bearing	BRG2035AXKASGB4605	1
23	Flat washer A type	WSH20GB97D1Z	1
24	Prevailing torque type 1 hexagon nut	M20GB889D1Z	1

# 5-2.Scoring motor assembly

No.	Description	Parts No.	QTY
1	Scoring motor support axle	JXPS1602024001	1
2	Hex socket countersunk head screws	M6X16GB70D3Z	4
3	Scoring motor seat	JXPS1604024002	1
4	Hex socket set screws with flat point	M8X40GB77B	1
5	Oversize washer	WSH8GB5287Z	1
6	Prevailing torque type 1 hexagon nut	M8GB889D1Z	1
7	Scoring motor	YSH715082	1
8	Hexagon socket cap screw	M5X16GB70D1Z	1
9	Standard spring washer	WSH5GB93Z	1
10	Oversize washer	WSH5GB5287Z	1
11	scoring motor wheel	JXPS1602024005	1
12	Hexagon socket cap screw	M6X25GB70D1Z	2
13	Air spring back shaft	JXPS1604024001	1
14	Air spring (100N/180mm)	JXPS1602023005	1
15	Hexagon nut type 1	M6GB6170Z	2



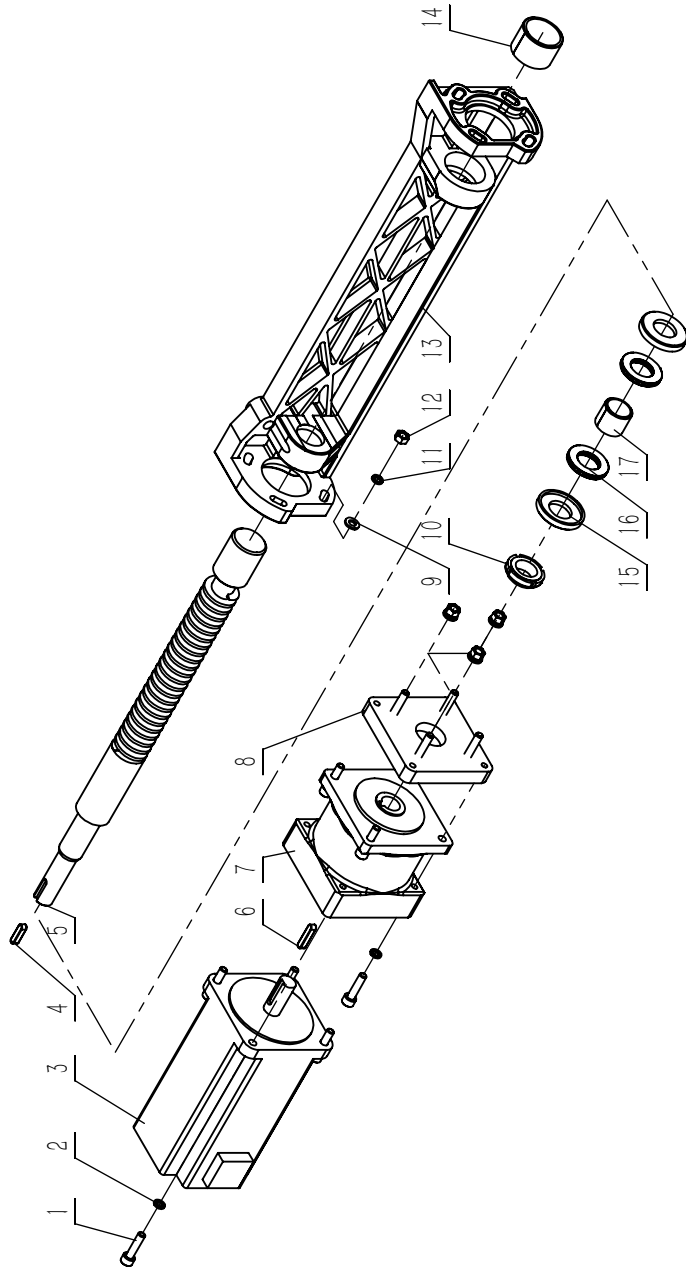
# 5-3.Scoring elevating adjustment assembly



No.	Description	Parts No.	QTY
1	Locking handle assembly	JXPS1201027100	1
2	Hexagon thin nut	M10GB6172D1Z	4
3	Locking wheel	JXTS1201028004	1
4	Sleeve	JXPS1201027001A	1
5	Flat washer A class	WSH10GB97D1Z	2
6	Supporting plate	JXPS1604028001	1

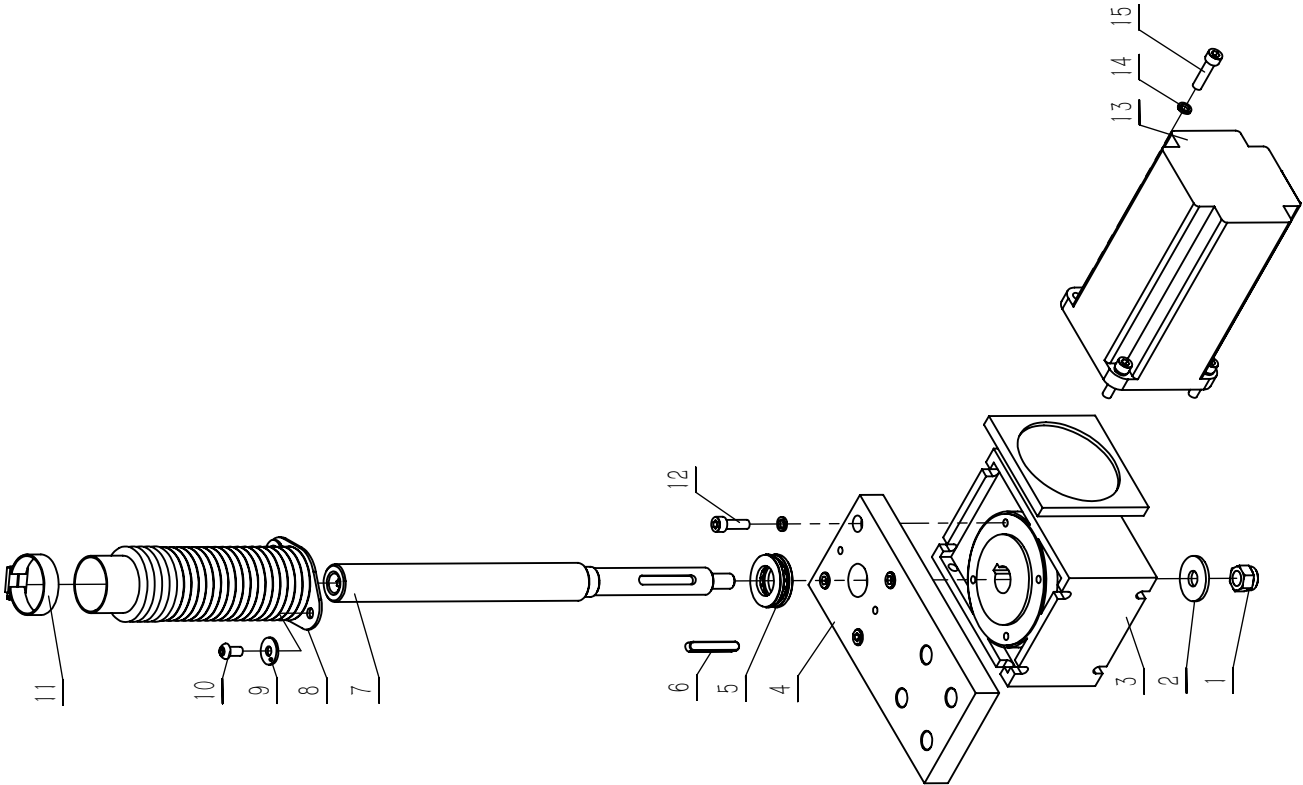


## 6. Main blade tilting assembly



No.	Description	Parts No.	QTY
1	Hexagon socket cap screw	M6X25GB70D1B12D9	8
2	Standard spring washer	WSH6GB93B	8
3	Stepper motor	3404HS60U14	1
4	Flat key	PLN5X5X20GB1096	1
5	Worm	JXPS1604027003	1
6	Flat key	PLN5X5X25GB1096D1	1
7	planetary reducer	PX86N004S0-JXX	1
8	Tilting motor seat assembly	JXPS1604027004	1
9	Flat washer A class	WSH6GB97D1Z	4
10	Circle nut M20×1	000301849F	1
11	Standard spring washer	WSH6GB93Z	4
12	Hexagon nut type 1	M6GB6170B	4
13	Axle seat	SCPS1601026005	1
14	Roll sleeve	P30X35X24GB12613	1
15	Aluminum cap 2	0346631500L	2
16	Pushing bearing	BRG2035AXKASGB4605	2
17	Roll sleeve	P20X24X20GB12613	1

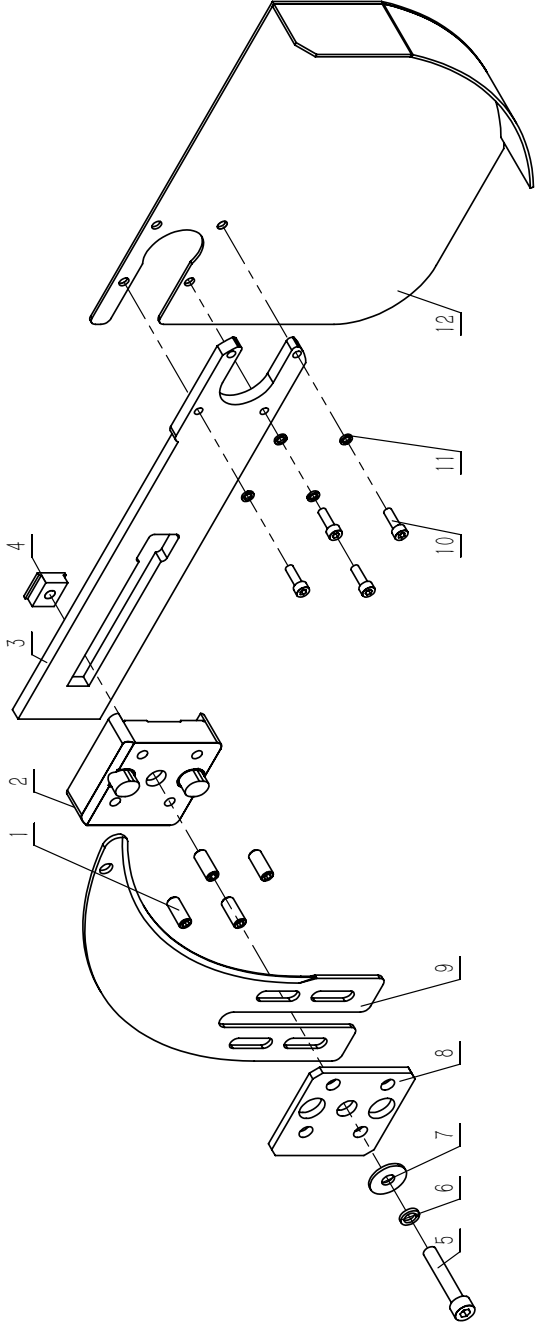
# 7.Main blade elevating assembly



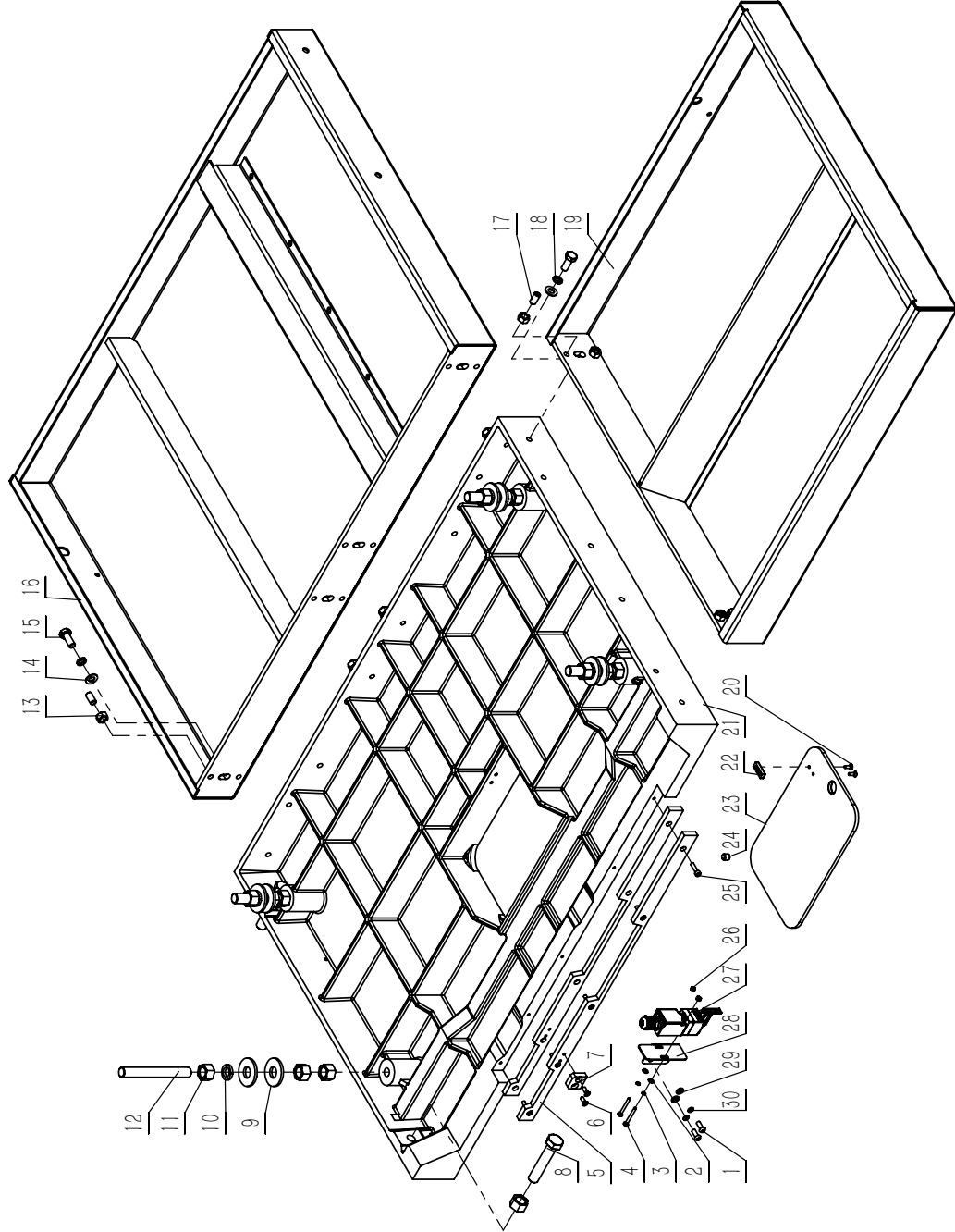
No.	Description	Parts No.	QTY
1	Prevailing torque type 1 hexagon nut	M10GB889D1Z	1
2	Large washer A class	WSH10GB96D1Z	1
3	Square flange reducer	NMRV40-7D5-86	1
4	Elevating plate	JXPS1604026001	1
5	Pushing ball bearing	BRG51104GB301	1
6	Flat key A type	PLN6X6X40GB1096	1
7	Elevating thread	JXPS1604026002	1
8	Shield assembly	JXPS1604026003	1
9	Large washer A class	WSH6GB96D1Z	2
10	Hexagon socket button head screw	M6X12GB70D2Z	2
11	Eye protective cover clamp	JL50000017	1
12	Hexagon socket cap screw	M6X20GB70D1Z	4
13	Stepper motor	3404HS60U14	1
14	Standard spring washer	WSH6GB93Z	8
15	Hexagon socket cap screw	M6X25GB70D1Z	4

# 8.Riving knife assembly

No.	Description	Parts No.	QTY
1	Hexsocket set screws with flat point	M8X20GB77Z	4
2	Riving knife mounting seat	JXPS1602029004B	1
3	Riving knife adjust plate	JXPS1602029001B	1
4	Riving knife locking block	JXPS1201028005A	1
5	Hexagon socket cap screw	M8X45GB70D1Z	1
6	Standard spring washer	WSH8GB93Z	1
7	Large washer A class	WSH8GB96D1Z	1
8	Riving knife mounting plate	JXPS1602029003C	1
9	Riving knife	JXPS1602029002B	1
10	Hexagon socket cap screw	M5X16GB70D1Z	4
11	Standard spring washer	WSH5GB93Z	4
12	Dust cover	JXPS1602020015B	1

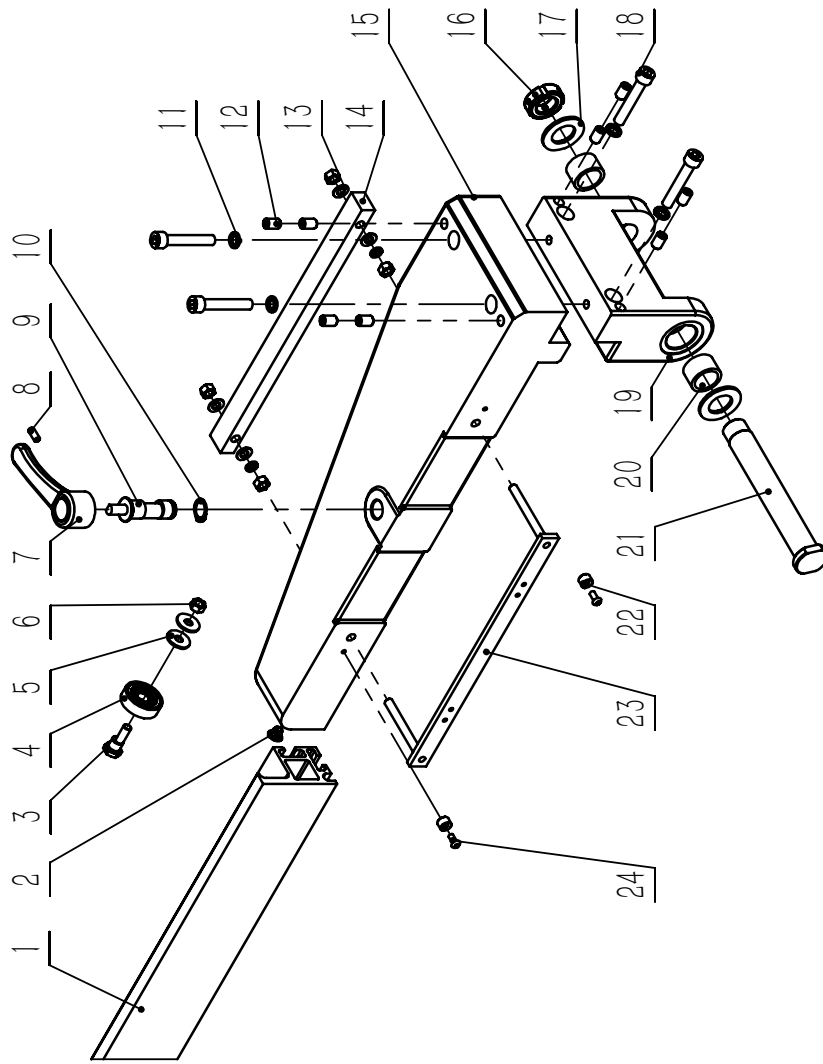


# 9. Table assembly



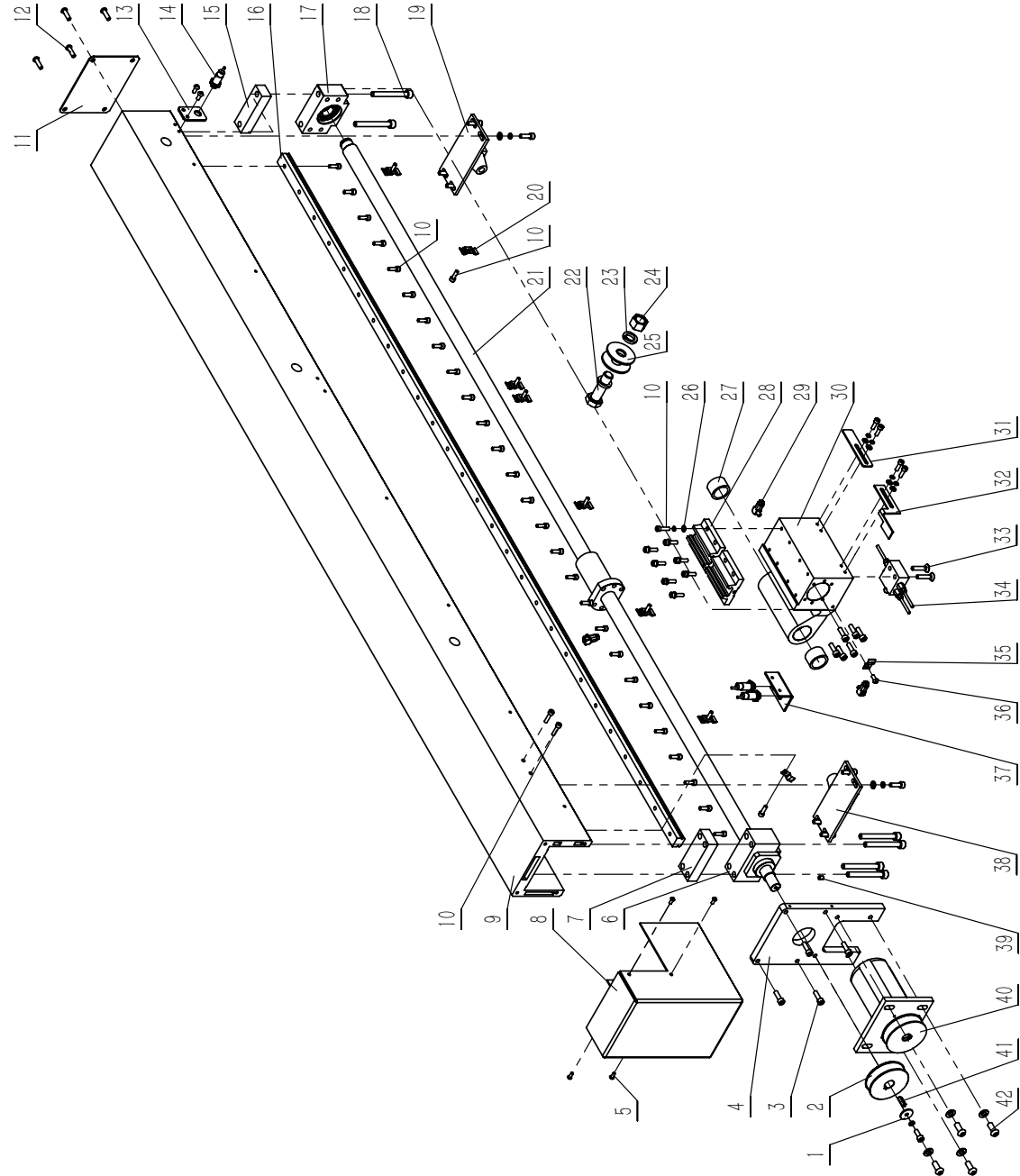
No.	Description	Parts No.	QTY
1	Hexagon socket button head screw	M6X16GB70D2Z	2
2	Flat washer A class	WSH4GB97D1Z	2
3	Standard spring washer	WSH4GB93Z	2
4	Cross recessed pan head screw	M4X35GB818Z	2
5	Insert panel	JXPS1602030002	2
6	Cross recessed countersunk head screw	M5X14GB819D1B	2
7	Insert panel block	JXPS1602030004	1
8	Hexagon-headed bolt(full thread)	M16X80GB77B	2
9	Locking flat washer	JL81020017	8
10	Standard spring washer	WSH16GB93Z	4
11	Hexagon nut type 1	M16GB6170Z	14
12	Thread rod	JXPS1602000001	4
13	Hexagon nut type 1	M10GB6170Z	13
14	Flat washer A class	WSH10GB97D1Z	6
15	Hexagon-headed bolt(full thread)	M10X25GB5783B	6
16	Right subsidiary operating board	JXPS1604031000A	1
17	Hex socket set screws with flat point	M10X20GB77Z	13
18	Standard spring washer	WSH10GB93Z	6
19	Back subsidiary operating board	JXPS1602031000	1
20	Hex socket countersunk head screws	M4X12GB70D3B	2
21	Main operating board	JXPS1604030001	1
22	Thread board	JL27010017	1
23	Movable board	JXPS1604030005	1
24	Hex socket set screws with flat point	M10X10GB77B	4
25	Hexagon socket cap screw	M5X20GB70D1B	5
26	Hexagon nut type 1	M4GB6170Z	2
27	Limited switch	QKS8	1
28	Limited switch mounting plate	JXPS1604091003	1
29	Flat washer A class	WSH6GB97D1Z	2
30	Standard spring washer	WSH6GB93Z	2

# 10.Rip fence assembly



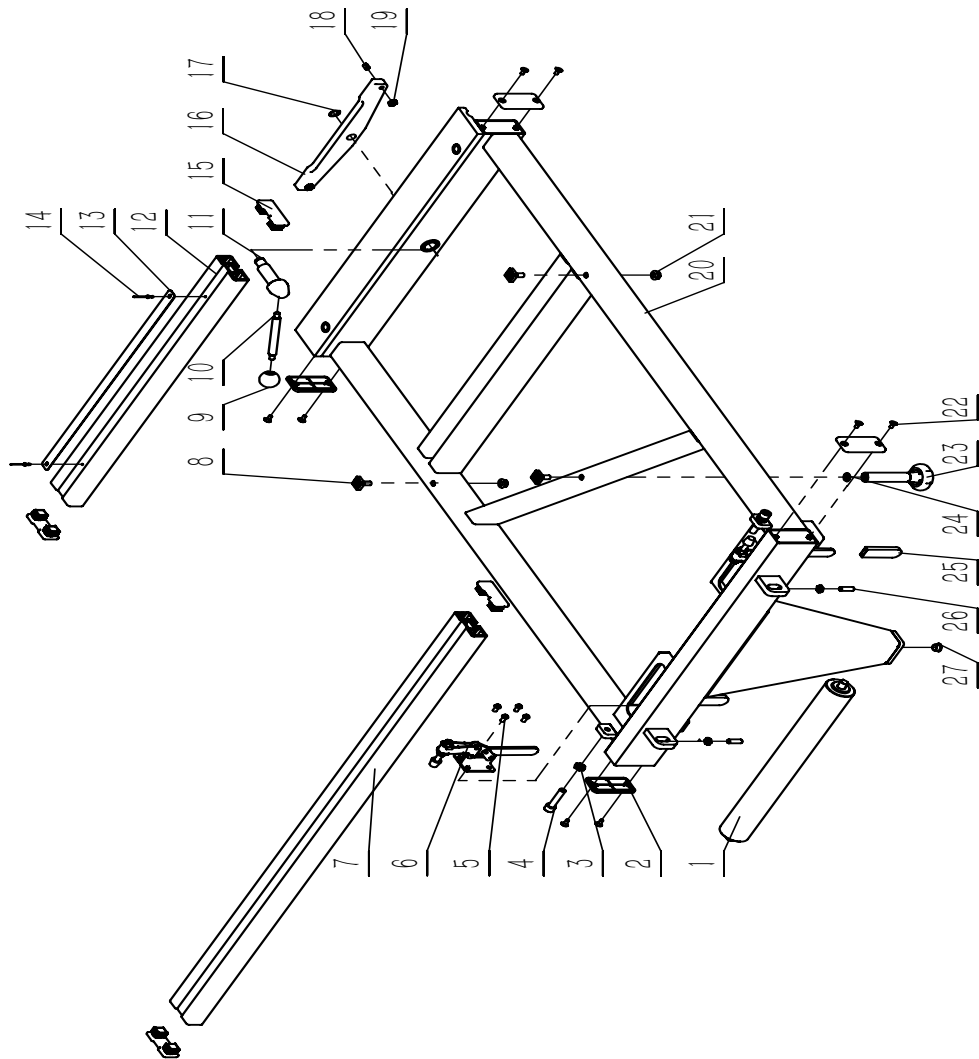
No.	Description	Parts No.	QTY
1	Rip fence L type	JXPS1201060004B	1
2	Plastic cover	JXPT1201040021	1
3	Deflection adjustable axle	JXPS1201061004	1
4	Rubber wheel	JXPS1604061007	1
5	Large washer A class	WSH8GB96D1Z	2
6	Hexagon nut type 1	M8GB6170Z	5
7	Locking handle assembly with rip fence	JXPS1201061100	1
8	hex socket set screw with cup point	M6X16GB80B	1
9	Locking axle	JXPS1604061004	1
10	Circlips for shaft type A	CLP18GB894D1B	1
11	Standard spring washer	WSH10GB93B	6
12	Hex socket set screws with flat point	M10X16GB77B	8
13	Flat washer A class	WSH8GB97D1Z	4
14	Locking plate	JXPS1604061005	1
15	Rip fence seat	JXPS1604061001	1
16	Locking nut	R-M24X1.5	1
17	Large washer	JXPS1201020005	2
18	Hexagon socket cap screw	M10X60GB70D1B	4
19	Rotary seat	JXPS1604061002	1
20	Slide sleeve	P25X32X20GB18323	2
21	Rip fence seat connected shaft	JXPS1604061003	1
22	eccentric sleeve	JXPS1602061006	2
23	Locking plate assembly	JXPS1604061100	1
24	Hexagon socket button head screw	M5X12GB70D2Z	2

# 11.Rip fence rail assembly



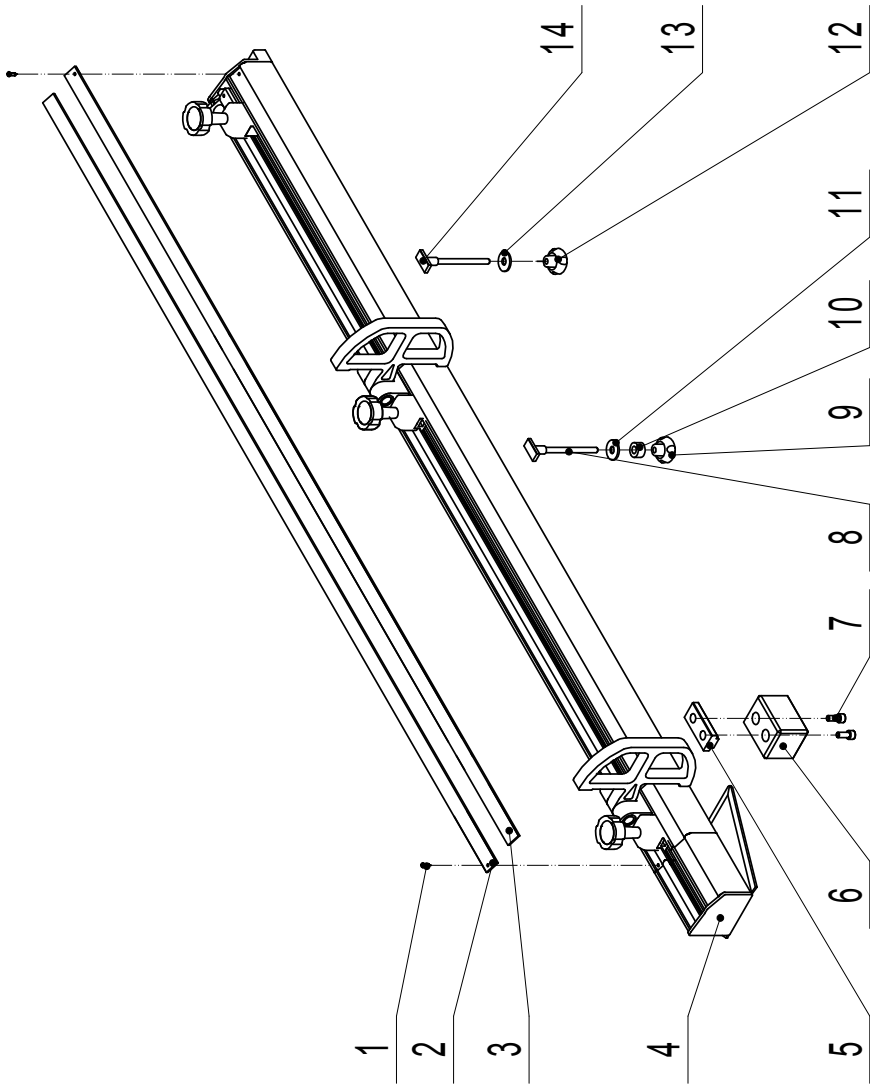
No.	Description	Parts No.	QTY
1	Oversize washer	WSH6GB5287Z	1
2	small synchronous pulley	JXPS1604062007	1
3	Hexagon socket cap screw	M6X20GB70D1Z	19
4	Junction plate	JXPS1604062004	1
5	Hexagon socket button head screw	M4X10GB70D2B	4
6	Ball-screw seat	BK-20	1
7	Wide heel block	JXPS1604062008	1
8	Servo motor cover	JXPS1604062006	1
9	Locating seat	JXPS1604062002	1
10	Hexagon socket cap screw	M5X20GB70D1B	49
11	Slide cover	JXPS1604062005	1
12	Hexagon socket button head screw	M6X20GB70D2Z	1
13	Proximity switch locating plate	JXPS1604062012	4
14	Proximity switch	PR-12N4B	1
15	Narrow heel block	JXPS1604062009	3
16	Linear guide 2	JXPS1604062003	1
17	Screw supporting assembly	BF-20	1
18	Hexagon socket cap screw	M8X70GB70D1B	6
19	Stop block assembly	JXPS1604062300	1
20	Cable clamp	1502014-01	7
21	Ball-screw assembly	JXPS1604062100	1
22	Hexagon-headed bolt(full thread)	M16X55GB5783Z	1
23	Standard spring washer	WSH16GB93Z	27
24	Hexagon nut type 1	M16GB6170Z	1
25	Large washer A class	WSH16GB96D1Z	2
26	Flat washer A class	WSH6GB97D1Z	24
27	Slide sleeve	P25X32X20GB18323	2
28	Guide slider	TRS20FN-NZ0-FF	2
29	Tube joint assembly 2	JXPS1604062700	3
30	Screw seat	JXPS1604062001	1
31	Proximity switch connected plate	JXPS1604062010	1
32	Zero switch connected plate	JXPS1604062013	1
33	Hex socket countersunk head screws	M6X30GB70D3Z	2
34	Oil injection block assembly	JXPS1604062500	1
35	Cable clamp	1502014-02	3
36	Hexagon socket button head screw	M5X12GB70D2Z	4
37	Proximity switch locating plate 2	JXPS1604062011	1
38	Zero stop block assembly	JXPS1604062400	1
39	Hex socket set screws with flat point	M6X8GB77B	1
40	Servo motor assembly	JXPS1604062200	1
41	Flat key	PLN5X5X20GB1096	2
42	Hexagon socket button head screw	M8X20GB70D2Z	4
43	arc-teeth synchronous belt	400-5M15JB7512D1	1

# 12.Sliding carriage assembly



No.	Description	Parts No.	QTY
1	Roller	JXPS1604051002	1
2	Plastic cover	JXPS1201051014	4
3	Hexagon thin nut	M10GB6172D1Z	2
4	Hexagon socket cap screw	M10X45GB70D1Z	2
5	Hexagon socket button head screw	M6X12GB70D2Z	8
6	Quick release	JXPS1201051006	2
7	Long supporting plate	JXPS1201051011A	1
8	Locking block	JL84100003	3
9	Handle knob	JMBS1402040004	1
10	Handlebar	JXSM0401042104	1
11	Lateral bar locking axle	JXPS1604051003A	1
12	Scale plate seat	JXPS1201051012	1
13	Angular scale	JXPS1602051003	1
14	blind rivets	RVT3X7GB12618A	2
15	Plastic cover	GRPS1401051003	4
16	Lateral bar locking block	JXPS1604051001	1
17	Circlips for shaft type A	CLP14GB894D1B	1
18	Slotting set screws with flat point	M8X10GB73S	2
19	Hexagon thin nut	M8GB6172D1Z	4
20	Sliding carriage supporting assembly	JXPS1604051100A	1
21	Hexagon flange nut	M8GB6177D1Z	2
22	Hex socket countersunk head screws	M5X12GB70D3B	8
23	Locking handle assembly	JL84102000	1
24	Flat washer A class	WSH8GB97D1Z	1
25	Tool kit handle sleeve	JXPS1201051007	2
26	Hex socket set screws with flat point	M8X25GB77B	2
27	Wrapped bushed	P12X10X8-AGB12613	1

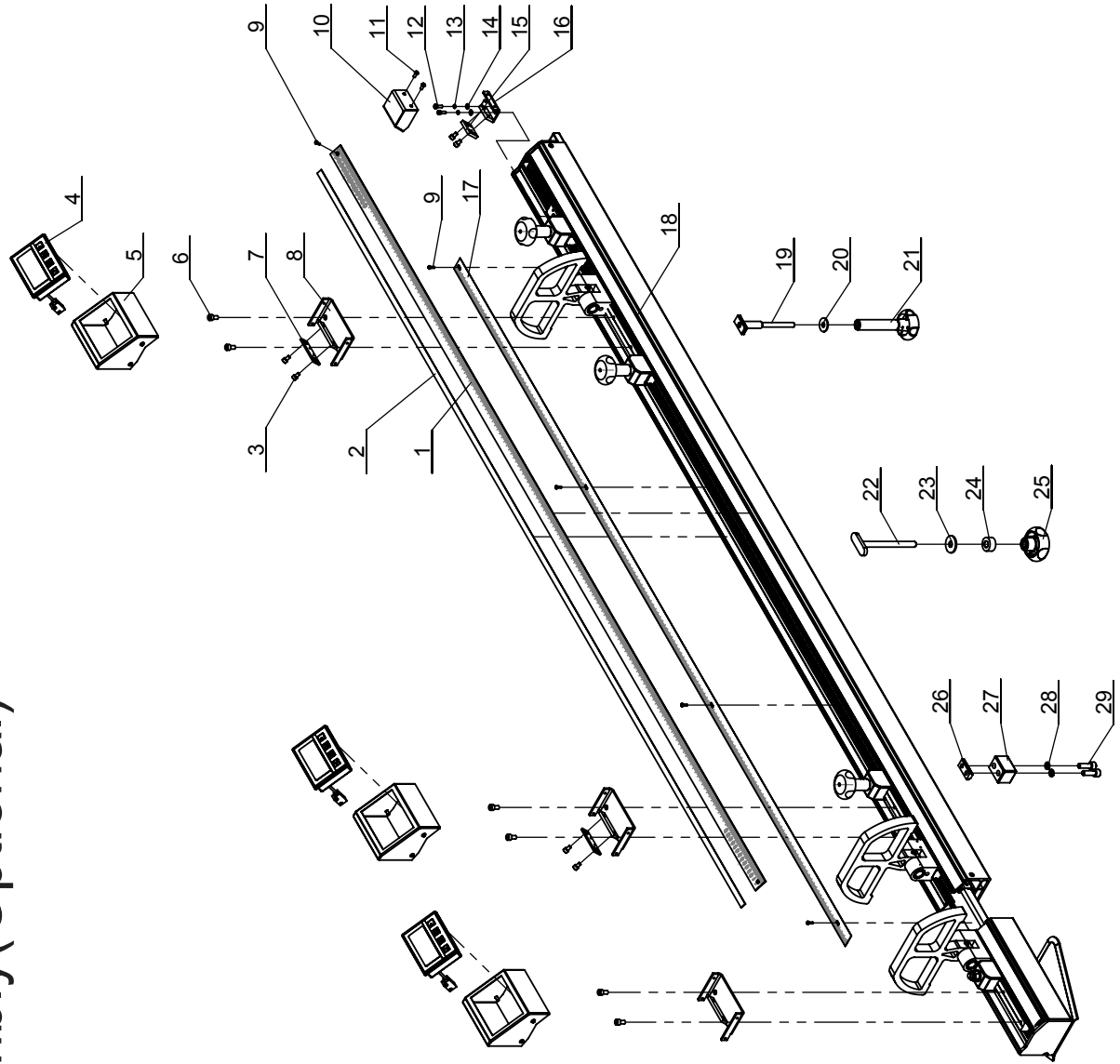
13.Cross cutting fence assembly



No.	Description	Parts No.	QTY
1	Cross recessed pan head screw	M4X6GB818Z	4
2	Ruller	JXPS1602053003A	1
3	Deputy ruler	JXPS1602053004A	1
4	Cross cutting fence assembly	JXPS1602053110	1
5	Slide block	JXPS1201053005H	1
6	Locating block	JXPS1201053007A	1
7	Screw	M8X20GB70D1Z	2
8	Type T bolt	JXPS1602053005	1
9	Circle handlebar M10	JXPT1201060013	1
10	Sleeve	JXPS1602053006	1
11	Large washer	WSH10GB96Z	1
12	Circle handlebar M8	JXTS1201131001-001S	1
13	Large washer	WSH8GB96Z	2
14	Slide block	JXPS1201053005D	1

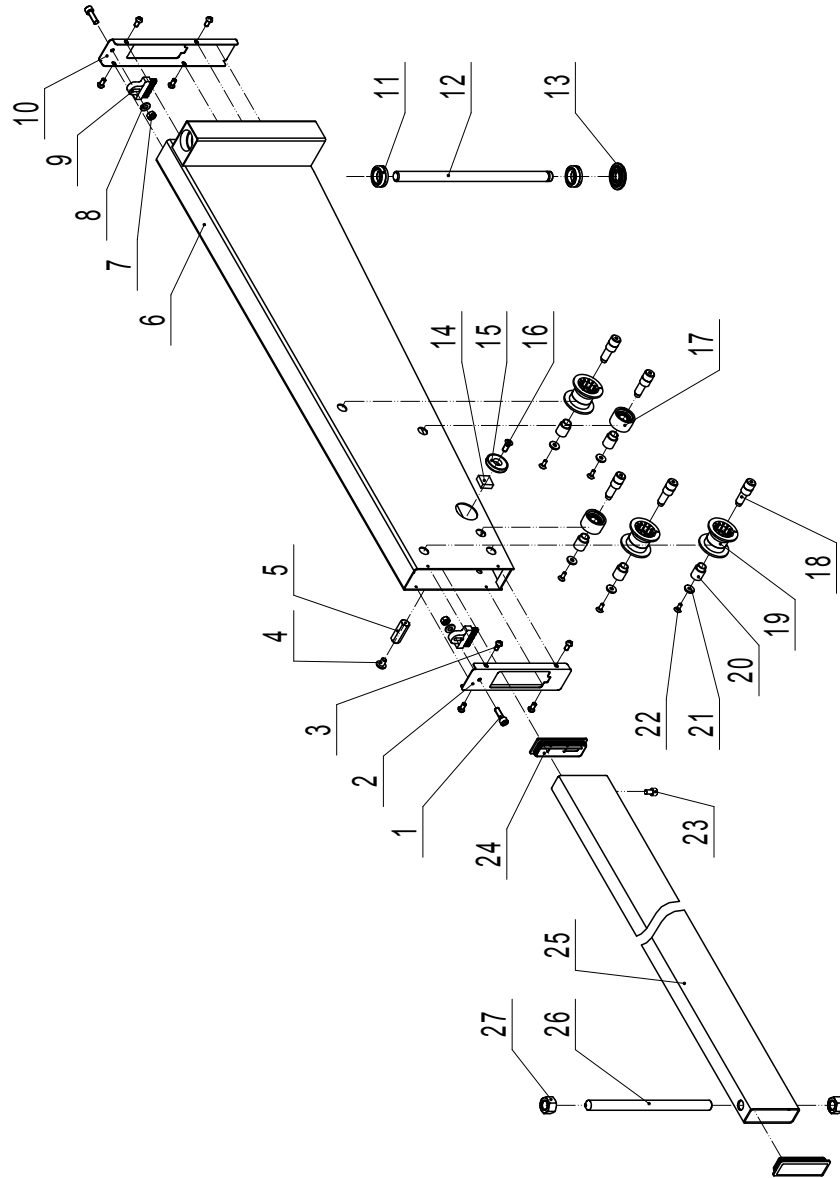


# 14.Digital cross cutting fence assembly(Optional)



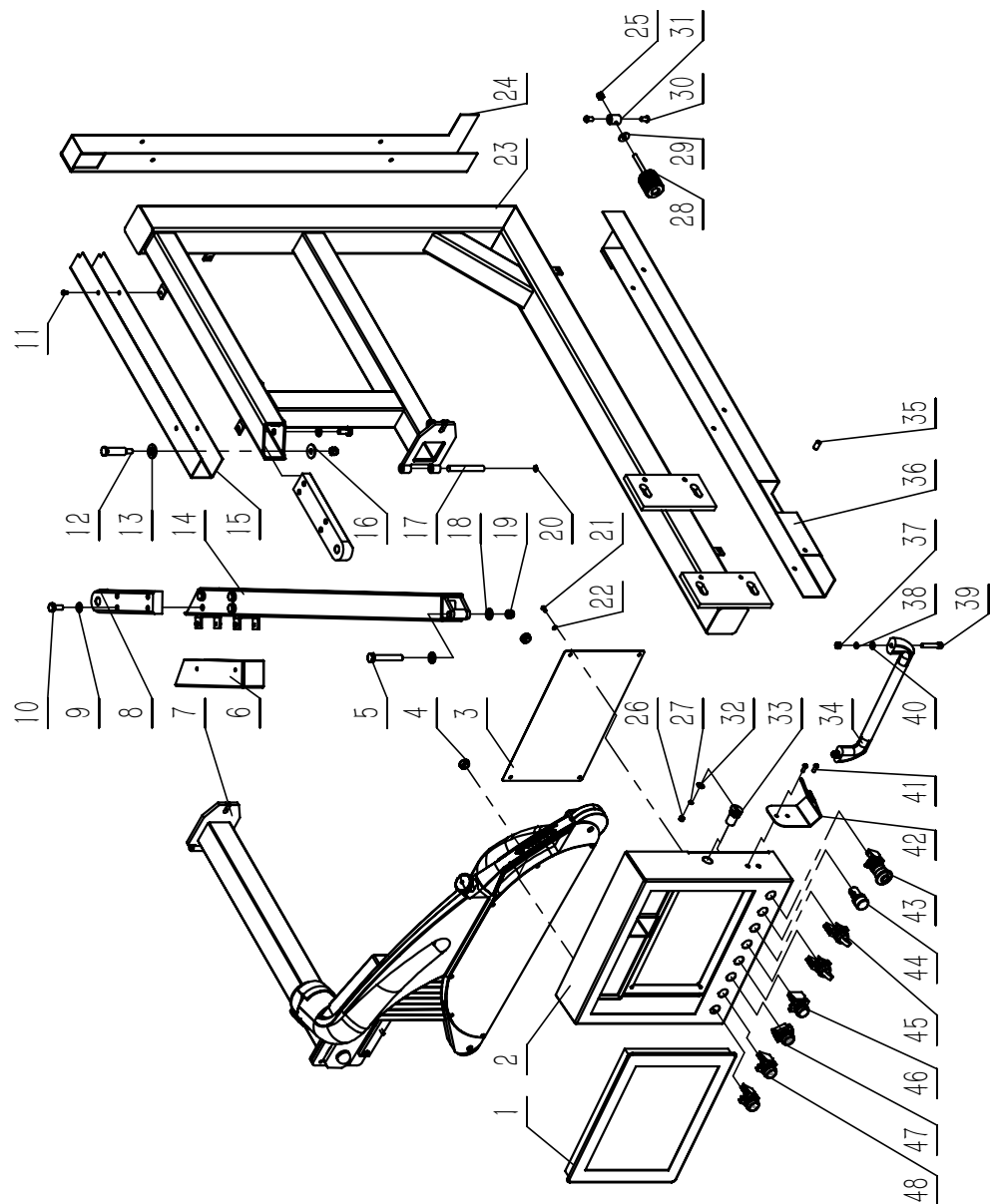
No.	Description	Parts No.
1	Main scale	JXPS1602053003F
2	Magnetic scale	EMB2025-1820
3	Hexagon socket screw	M5X8GB70D1Z
4	Digital display	IZ16E
5	Digital display guard	JXPS1604053001
6	Hexagon socket screw	M6X12GB70D1Z
7	Adjust plate	JXPS1604053004
8	Digital display bracket	JXPS1604053200
9	Screw	M3X10GB818Z
10	Sensor guard	JXPS1604053006
11	Hexagon socket screw	M4X10GB70D2B
12	Hexagon socket screw	M4X12GB70D1Z
13	Spring washer	WSH4GB93Z
14	Washer	WSH4GB97D1Z
15	Adjust plate	JXPS1604053004A
16	Digital display bracket	JXPS1604053200A
17	Scale	JXPS1602053004G
18	Fence Assembly	JXPS1604053100A
19	Sliding block	JXPS1604053005
20	Washer	WSH8GB96D1Z
21	Lock handle	JL84102000
22	T-bolt	JXPS1602053005
23	Washer	WSH10GB96D1Z
24	Sleeve	JXPS1602053006
25	Handle	JXPT1201060013
26	Sliding block	JXPS1201053005H
27	Set block	JXPS1201053007A
28	Spring washer	WSH8GB93Z
29	Hexagon socket screw	M8X25GB70D1Z

# 15.Support arm assembly



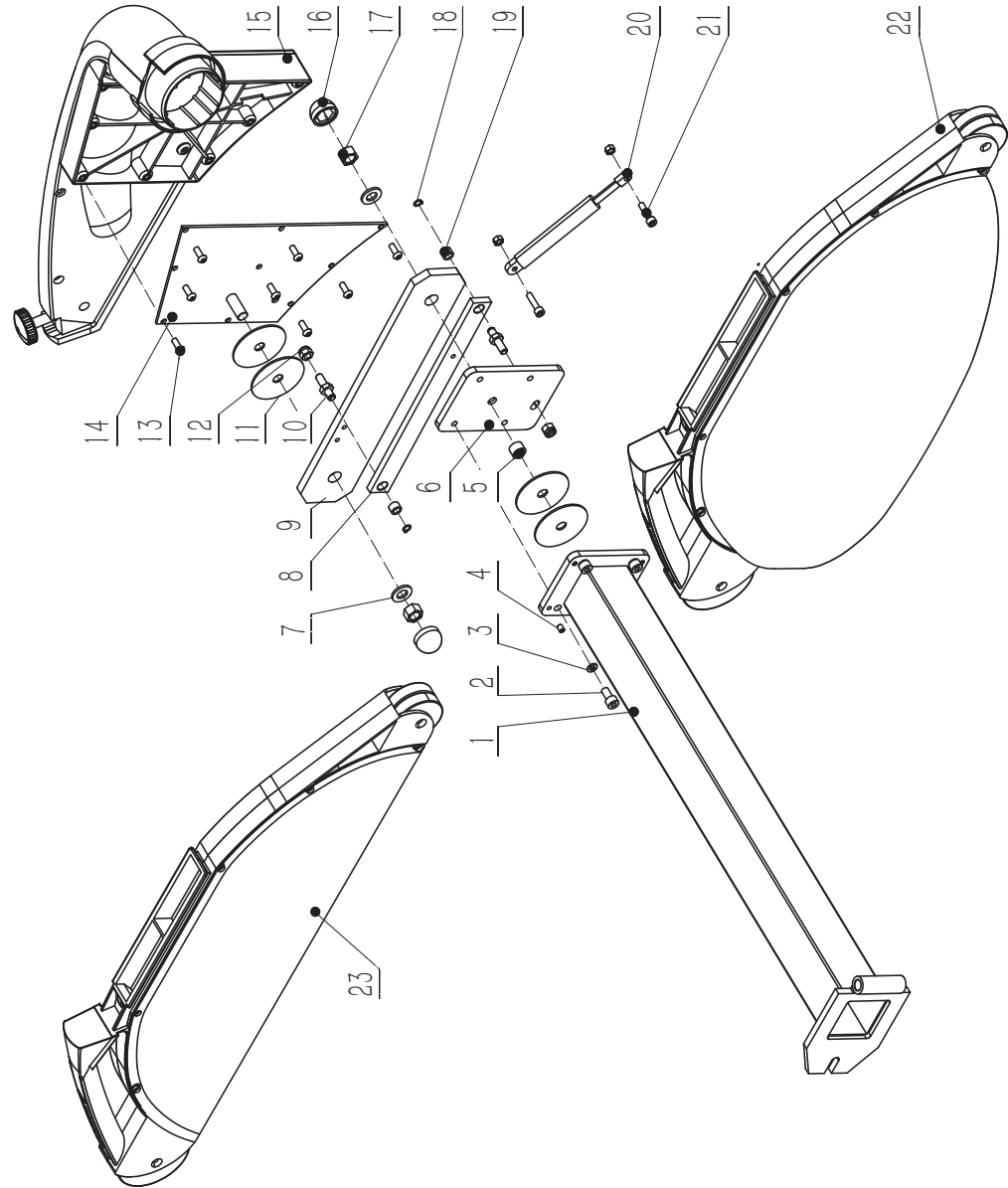
No.	Description	Parts No.	QTY
1	Hexagon socket button head screw	M6X20GB70D2Z	2
2	Cover board 1	JXPS1602052005	1
3	Cross recessed pan head screw	M5X12GB818Z	8
4	Flat screw M10	SCPS1601052015	1
5	Hexagon prism	JXPS1204050001	1
6	Support frame	JXPS1602052003B	1
7	Hexagon nut type-1	M6GB6170Z	2
8	Flat washer A class	W5H6GB97D1Z	2
9	Brush	JXTS1201052005	2
10	Cover board 2	JXPS1602052006	1
11	deep groove ball bearing	BRG6004-2RZGB276	2
12	Connective axle	JXPS1201052005B	1
13	Gasket	JXPS1201052006A	1
14	Sponge	SCPS1601052020	1
15	Magnet	SCPS1601052014	1
16	Hexagon socket cap screw	M4X20GB70D1B	1
17	Bearing roller 1	SCPS1601052007	2
18	Deflection axle	SCPS1601052004	5
19	Bearing roller 2	SCPS1601052019	3
20	Axle sleeve tube	SCPS1601052005	5
21	Tapered bore washer	SCPS1601052006	5
22	Hexagon socket countersunk head screws	M6X16GB70D3Z10D9	5
23	Hexagon socket cap screw	M6X12GB70D1Z	1
24	Plastic cover	JXPS1602052008	2
25	Back and forth tube	JXPS1602052004B	1
26	Support rod	JXPS1604052001	1
27	Hexagon thin nut	M20GB6173Z	2

16. Opearting platform assembly



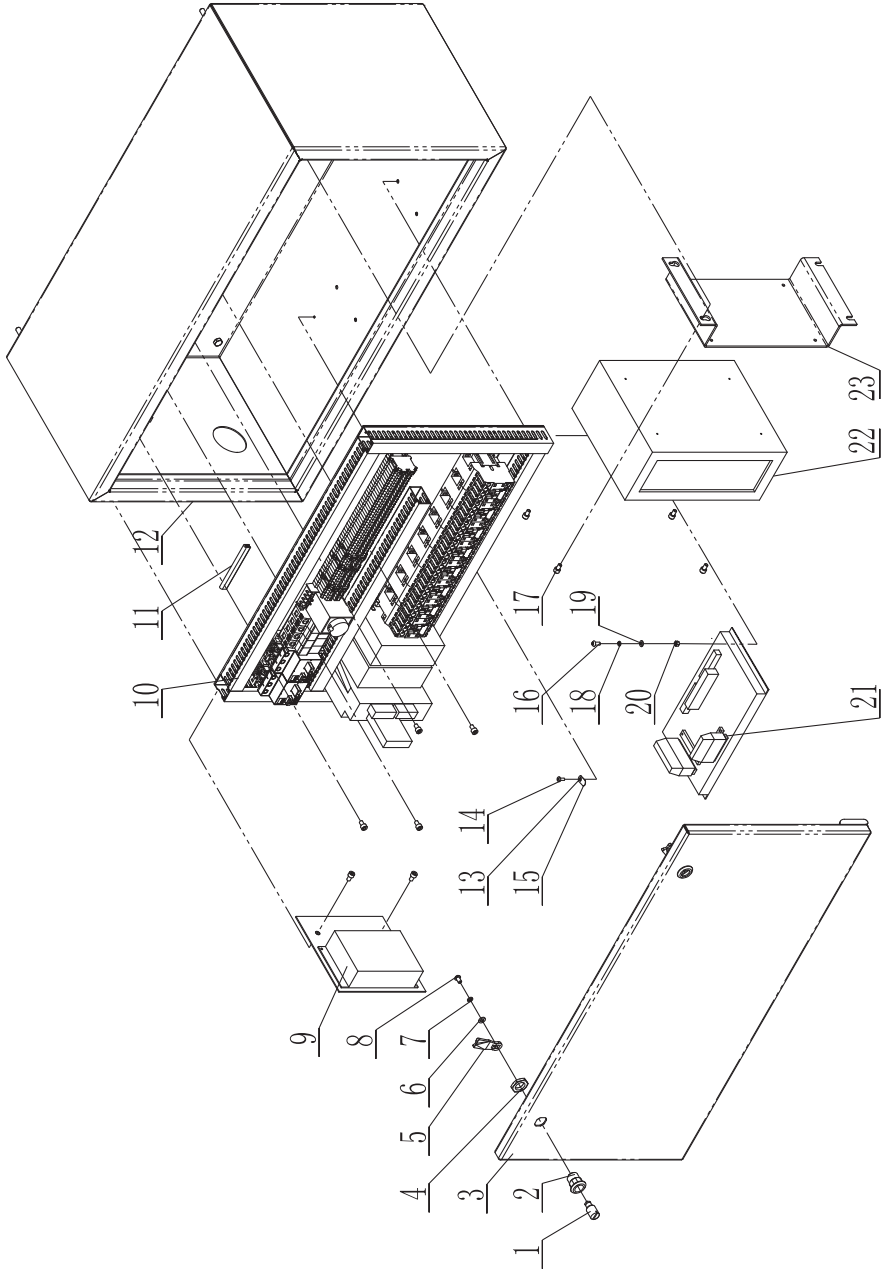
No.	Description	Parts No.	QTY
1	15 inch display	TPC150-27	1
2	Operating platform cover assembly	JXPS1604083000A	1
3	Back cover panel	JXPS1604080005A	1
4	Plug	JL22011006	2
5	Hexagon-headed bolt(full thread)	M12X80GB5783Z	1
6	Cable fender	JXPS1604080010	1
7	Fixed blade cover	JXPS1604081000A	1
8	Connective rod	JXPS1604082010A	2
9	Flat washer A class	WSH10GB97D1Z	8
10	Hexagon-headed bolt(full thread)	M10X25GB5781Z	8
11	Hexagon socket button head screw	M6X10GB70D2B	16
12	Hinge axis	JXPS1604080011	1
13	Flat washer A class	WSH16GB97D1Z	1
14	Operating platform connective rod assembly	JXPS1604084000A	1
15	Upper shield panel	JXPS1604080009	1
16	Large washer A class	WSH10GB96D1Z	1
17	Rotatory axle	JXPS1201080001	1
18	Flat washer A class	WSH12GB97D1Z	2
19	Hexagon locking nut	M10GB889D1Z	2
20	Circlips for aperture type A	CLP12GB893D1B	1
21	Cross recessed pan head screw	M5X10GB818Z	4
22	Flat washer A class	WSH5GB97D1B	4
23	Locating support assembly	JXPS1604082000A	1
24	Shield panel	JXPS1604080002A	1
25	Hexagon locking nut	M8GB889D1Z	1
26	Hexagon nut type-1	M6GB6170Z	2
27	Standard spring washer	WSH6GB93Z	2
28	Fine adjustment handle	JXPS1201061010	1
29	Large washer A class	WSH8GB96D1Z	1
30	Hexagon socket button head screw	M8X16GB70D2Z	2
31	Rotating arm locking block	JXPS1201080002	1
32	Flat washer A class	WSH8GB97D1B	2
33	USB transform interface	U09A-AF-AF-B	1
34	Tubular handle	JE8040-25X320	1
35	Hexagon socket set screws with flat point	M10X20GB77Z	4
36	Shield panel	JXPS1604080003	1
37	Hexagon nut type-1	M8GB6170Z	2
38	Standard spring washer	WSH8GB93Z	2
39	Hexagon socket cap screw	M8X45GB70D1Z	2
40	Flat washer A class	WSH8GB97D1Z	2
41	Hexagon socket button head screw	M6X16GB70D2B	2
42	Support	JXPS1604083005	1
43	Scram botton	XB5AS542C	1
44	Power indicator ( white)	AD16	1
45	Infeed button	M22-WLK3-W-K11-LED	2
46	Start button (1 no)	M22-D-G-K10	1
47	Stop button	M22-D-S-X0-K01	1
48	Start button	M22-D-W-X1-K10	2

17.Fixed blade cover assembly



No.	Description	Parts No.	QTY
1	Rotating arm assembly	JXPS1604081100A	1
2	Hexagon socket cap screw	M8X16GB70D1Z	4
3	Flat key A class	WSH6GB97D1Z	6
4	Hex socket set screws with flat point	M6X8GB77B	4
5	Copper sleeve 1	JXPS1201083004	1
6	Connective welding plate	JXPS1201083100	1
7	Flat key A class	WSH12GB97D1Z	2
8	Connective rod	JXPS1602083002B	1
9	Long connective plate	JXPS1602083001B	1
10	Bolt for axle	JXPS1201083001	2
11	Gasket	JXPS1201083002	4
12	Hexagon locking nut	M8GB889D1Z	2
13	Hexagon socket button head screw	M6X16GB70D2Z	9
14	Locking welding plate	JXPS1201083200	1
15	Shield frame	JXPS1201083300	1
16	Nut cover	JXPS1201083005	2
17	Hexagon nut type-1	M6GB6170Z	4
18	Circlips for shaft type A	CLP8GB894D1B	2
19	Copper sleeve 2	JXPS1201083006	2
20	Gas spring	JKPS1601080002	1
21	Hexagon socket cap screw	M6X25GB70D1Z	2
22	Shield (45 degree)	JXPS1201083400	1
23	Shield (90 degree)	JXPS1201083400A	1

18.Electrical cabinet assembly



No.	Description	Parts No.	QTY
1	Key cylinder	JL20010010C	2
2	Key body	JL20010011A	2
3	Door weldment	JXPS1604091100	1
4	Hexagon nut	JL20010012	2
5	Tongue	JL20010009	2
6	Flat washer A class	WSH6GB97D1Z	2
7	Standard spring washer	WSH6GB93Z	2
8	Hexagon socket button head screw	M6X10GB70D2Z	2
9	Power source assembly	JXPS1604092000	1
10	Electrical assembly	JXPS1604091400	1
11	Rubber side bar	RG-1	1
12	Power distribution cabinet	JXPS1604091300A	1
13	External teeth lock washer	WSH5GB862D1Z	1
14	Cross recessed pan head screw	M4X10GB818Z	1
15	Grounding copper	1506016	1
16	Hexagon socket button head screw	M5X12GB70D2Z	4
17	Hexagon socket cap screw	M6X10GB70D1Z	10
18	Standard spring washer	WSH5GB93Z	4
19	Flat washer A class	WSH5GB97D1Z	4
20	Hexagon nut type 1	M5GB6170Z	4
21	Motion control card	GE-4000-SG-LASER-PCI	1
22	Embedded computer	BIS-6595	1
23	Computer mounting bracket	JXPS1604091208	1





